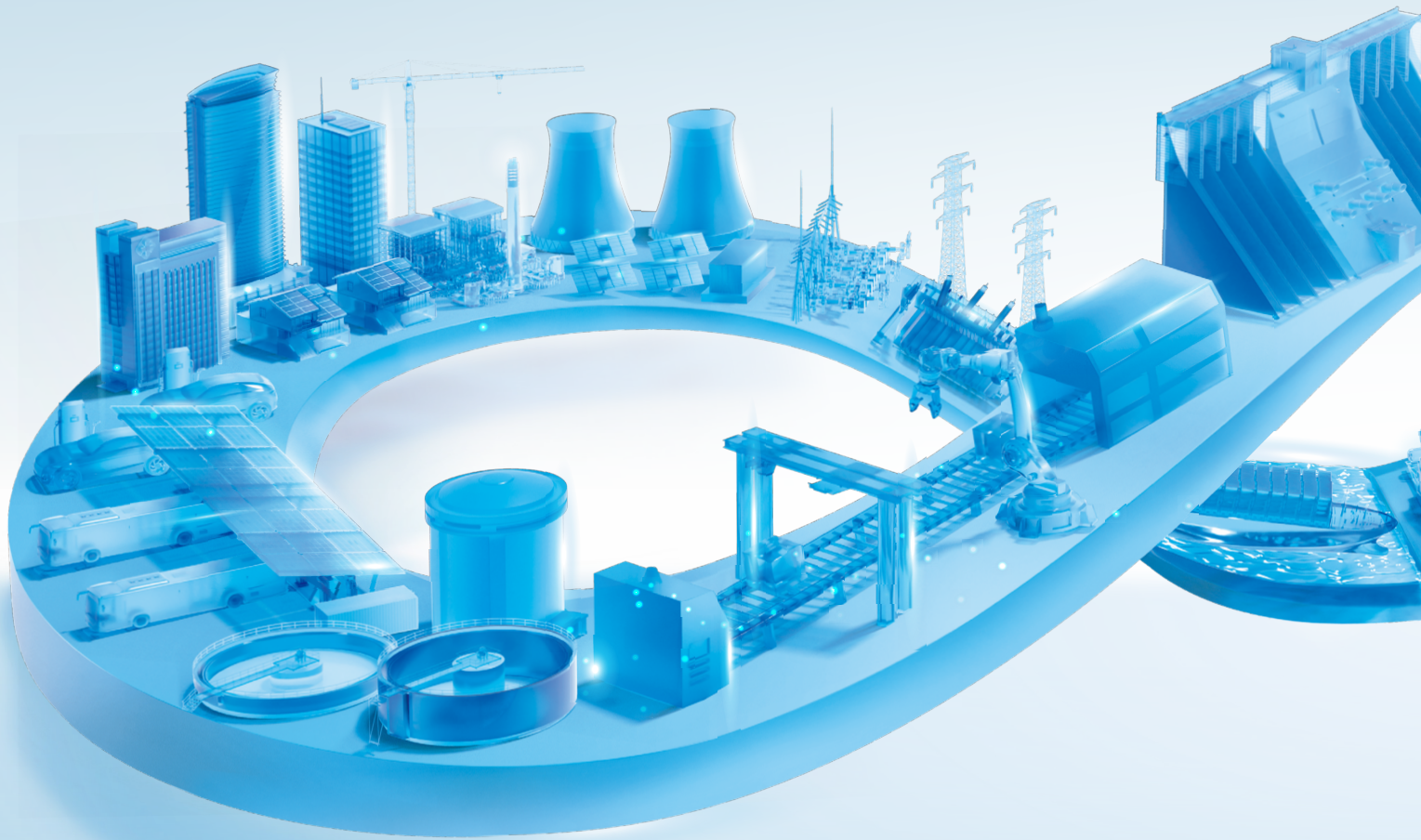


An aerial photograph of a large industrial facility, likely a solar panel manufacturing plant. The main building has a vast, flat roof covered with a grid of solar panels. The panels are arranged in long, parallel rows, separated by narrow aisles. The building's structure is made of light-colored metal. In the background, there are other industrial buildings, parking lots filled with cars, and a road with some greenery. The lighting suggests it's either early morning or late afternoon, with long shadows cast across the roof.

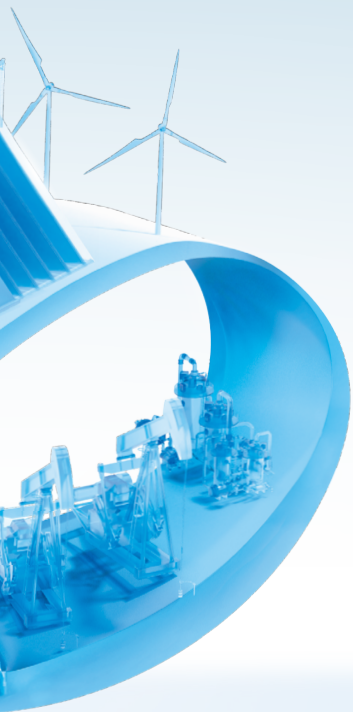
CHINT

Empower the World

CHINT Electric Solution for Solar Industry



CONTENTS



1.0	Who We Are	01
2.0	Industry Overview and Key Trends	07
3.0	Our Solution	08
4.0	Featured Products, Key Offerings & Complete Portfolio	11
5.0	Sales References	28
6.0	Contact Us	30

Who We Are - ABOUT CHINT



CHINT A leading global provider of smart energy solutions

Founded in 1984, CHINT Group Co., Ltd. (CHINT) is a global leading smart energy solutions provider. With more than 40 years of industry expertise, CHINT has remained committed to industrial innovation and brand excellence. Our company drives progress through five strategic pillars: industrialization, technological advancement, global expansion, digital transformation, and platform development.

CHINT operates across three core sectors—Green Energy, Intelligent Electrical Solutions, and Smart Low-Carbon Solutions—supported by two key platforms: CHINT Global and Sci-Tech Innovation Incubation. Its extensive business network spans more than 140 countries and regions, powered by a global workforce of over 50,000 employees.

In 2024, CHINT achieved USD 25 billion in revenue and has maintained its position among the Top 500 Chinese Enterprises for over 20 consecutive years. Notably, CHINT Electrics became China's first publicly listed company specializing in low-voltage electrical appliances, reinforcing its industry leadership.

Global Certification

The products have passed the standards and specifications in various regions around the world and obtained numerous international certifications



1.0

Who We Are - Business Scope

CHINT Light Up Boundless Possibilities in Electric Life

A new integrated ecosystem for the whole industry chain development of "power generation, energy storage, transmission, transformation, distribution, sales and consumption"



Crystalline Silicon Manufacturing



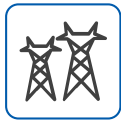
Household PV



Power System



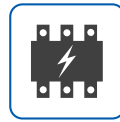
Wire and Cable



Power T&D



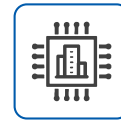
Integrated Power Distribution



Low Voltage Electrical



Meters



Building Electrical

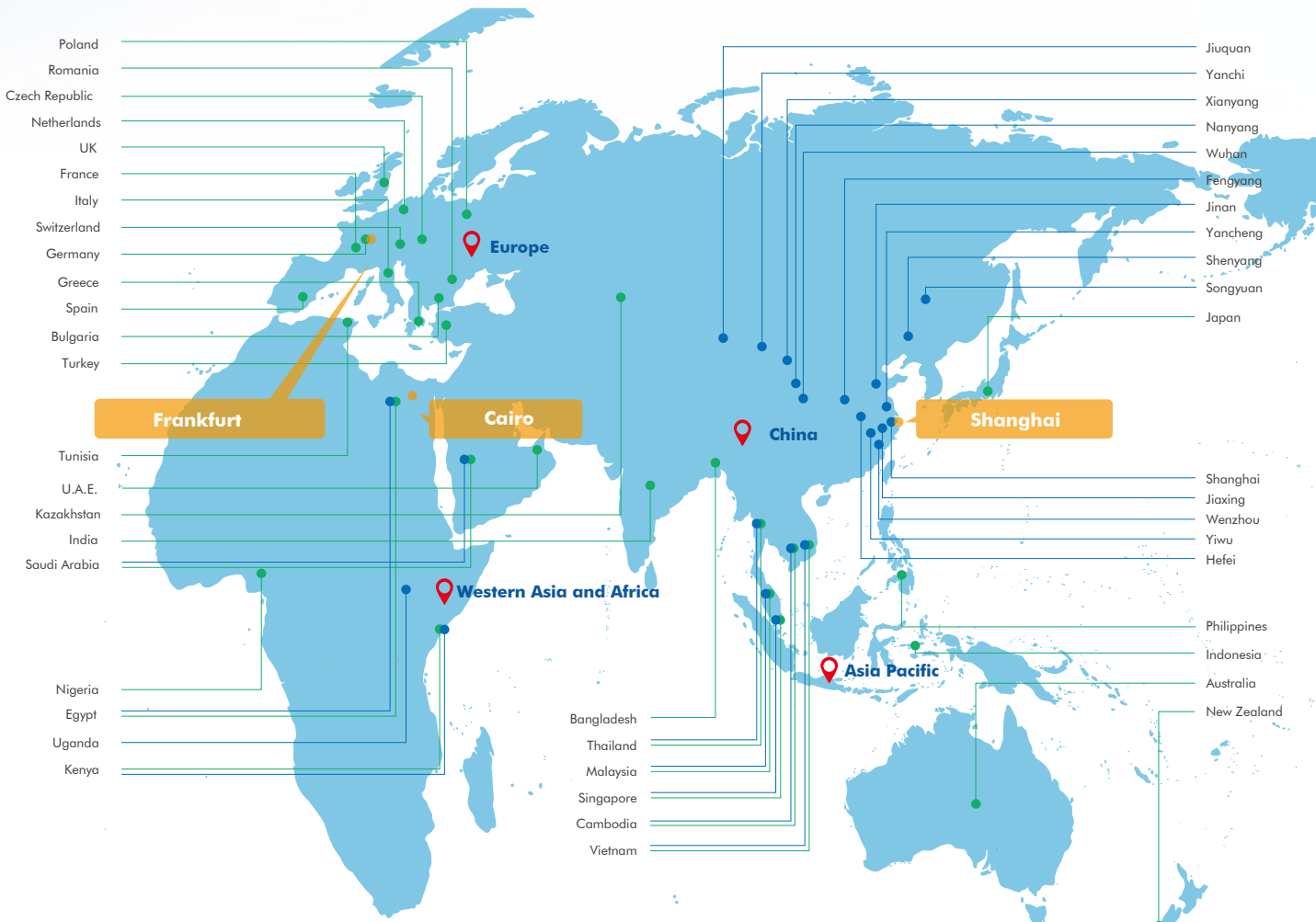
Green Energy

Intelligent Electricity

Smart Low-carbon



Who We Are - Global Footprints



- Global Subsidiaries
- Manufacturing Bases
- R&D Centers



4

Global R&D Centers

40+

Global Subsidiaries

30+

Global Manufacturing Bases

20+

Global Logistics Centers

Business Covering

140+

Countries and Regions

2,300+

Global Distributors

1.0

Who We Are - Global Capacity

Power T&D Shanghai Factory **China**

Main Products: Power transformer, GIS, MV and LV switchgear, HGIS, HV circuit breaker, disconnecter, surge arrester, insulator, cut-out fuse



Power T&D Jiaxing Factory **China**

Main Products: MV and LV switchgear, C-GIS, MV circuit breaker, prefabricated substation



Power T&D Xianyang Factory **China**

Main Products: Power quality equipment, CT&PT, busbar, cable



Power T&D Shandong Factory **China**

Main Products: 500kV and below power cable, solar cable, civil wire, ABC cable, low voltage flexible fire-resistant cable, special cable



Wenzhou Low-voltage Intelligent Factory **China**

Main Products: Low-voltage components



Haining Solar Intelligent Factory **China**

Main Products: PV module, PV cell



CHINT ATC **Saudi Arabia**

Main Products: RMU and intelligent power T&D products of 33kV and below



CHINT-AJLAN & Bros **Saudi Arabia**

Main Products: Low-voltage components



SchneiTec CHINT **Cambodia**

Main Products: MV equipment including 22kV distribution transformer, switchgear, smart RMU, capacitor bank



CHINT - EGEMAC **Egypt**

Main Products: Full series of low-voltage switchgears



Sunlight **Singapore & Malaysia**

Main Products: Low-voltage switchgears



Sunlight **Vietnam**

Main Products: MSB, MCC, SDB, DB, CU, fire pump panel, weatherproof panel, string combine box, solar switchboard



Smart Meter Factory **Uganda**

Main Products: Smart meters



Solar Factory **Thailand**

Main Products: PV module, PV cell



Smart Meter Factory **Kenya**

Main Products: Smart meters



1.0

Who We Are - Green Development



Takes action in the "Energy Revolution"
Helping achieve the "Carbon Neutrality" goals

Annual average green power generation
55+ billion kWh

Annual average coal savings
16+ million tons

Annual average carbon emission reduction
42+ million tons

The First in the Industry

Obtained **3** certifications from the MIIT of China



ESG

Ecovadis Silver



Joining the UNGC



Two honors in UNGC 2021 Best Practices



Carbon Neutrality

CHINT is taking action

Obtained the First Carbon Footprint Certification



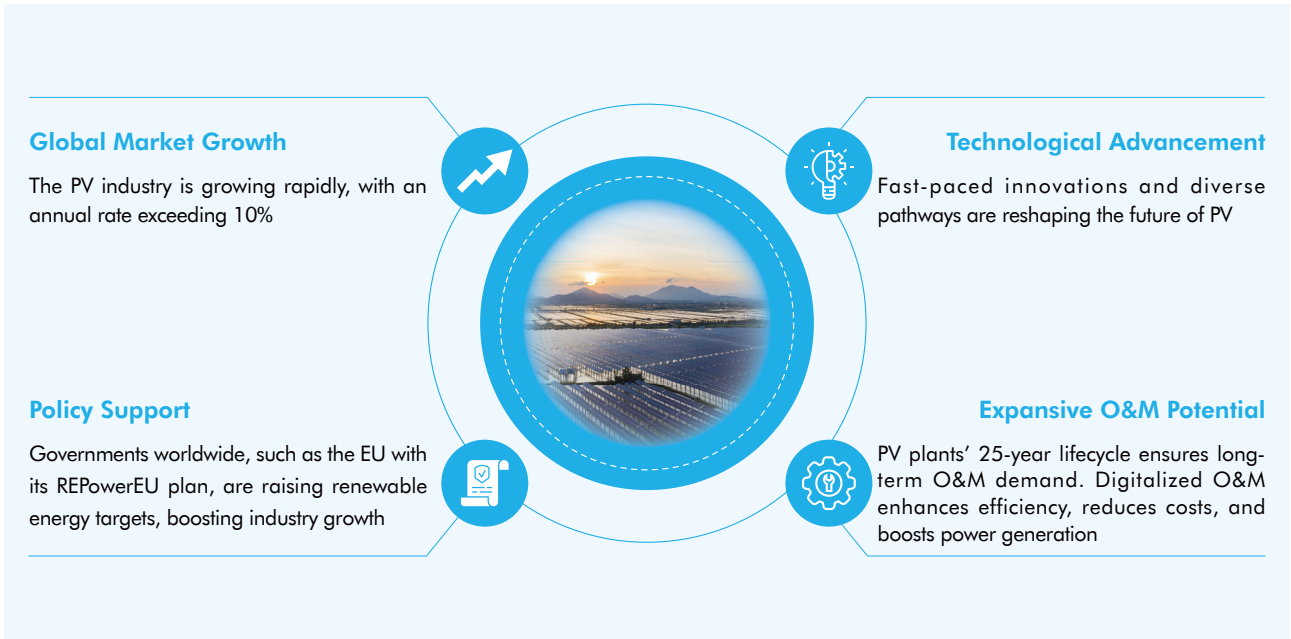
Carbon Footprint Certification in China's low-voltage electrical appliance industry



Carbon Footprint Certification for 110kV and 220kV transformers

2.0

Industry Overview and Key Trends



PV Module: advancing ultra-efficiency

Currently, high-efficiency technologies like TOPCon and HJT dominate, with future trends leaning toward ultra-high efficiency, multi-scene adaptability, and green manufacturing.



PV Inverter: moving smarter

Feature high efficiency, intelligence, and versatility, integrating optimization, grid control, and remote monitoring for use in residential, commercial, and large-scale systems.



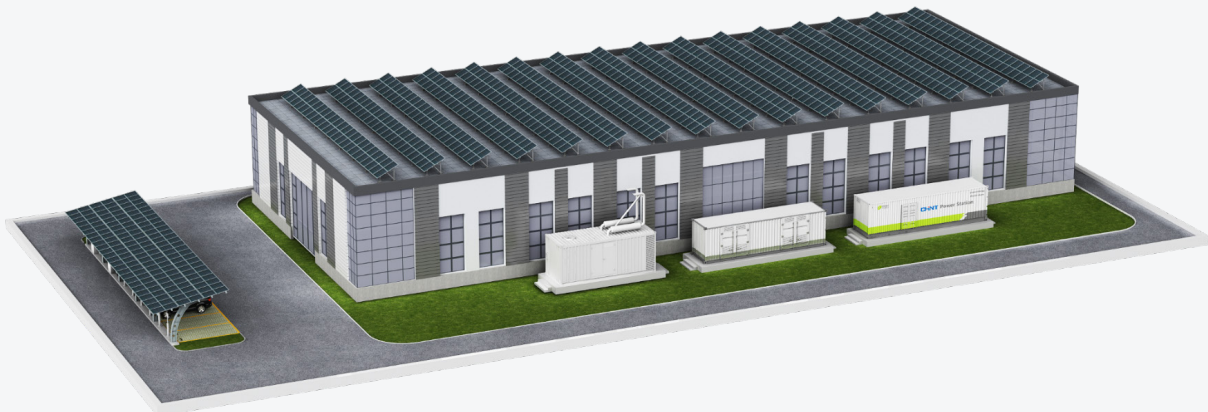
T&D: Focusing efficiency and compact design

Ensure efficient energy transmission and grid integration, with future trends focusing on higher efficiency, compact designs, and enhanced smart-grid compatibility.



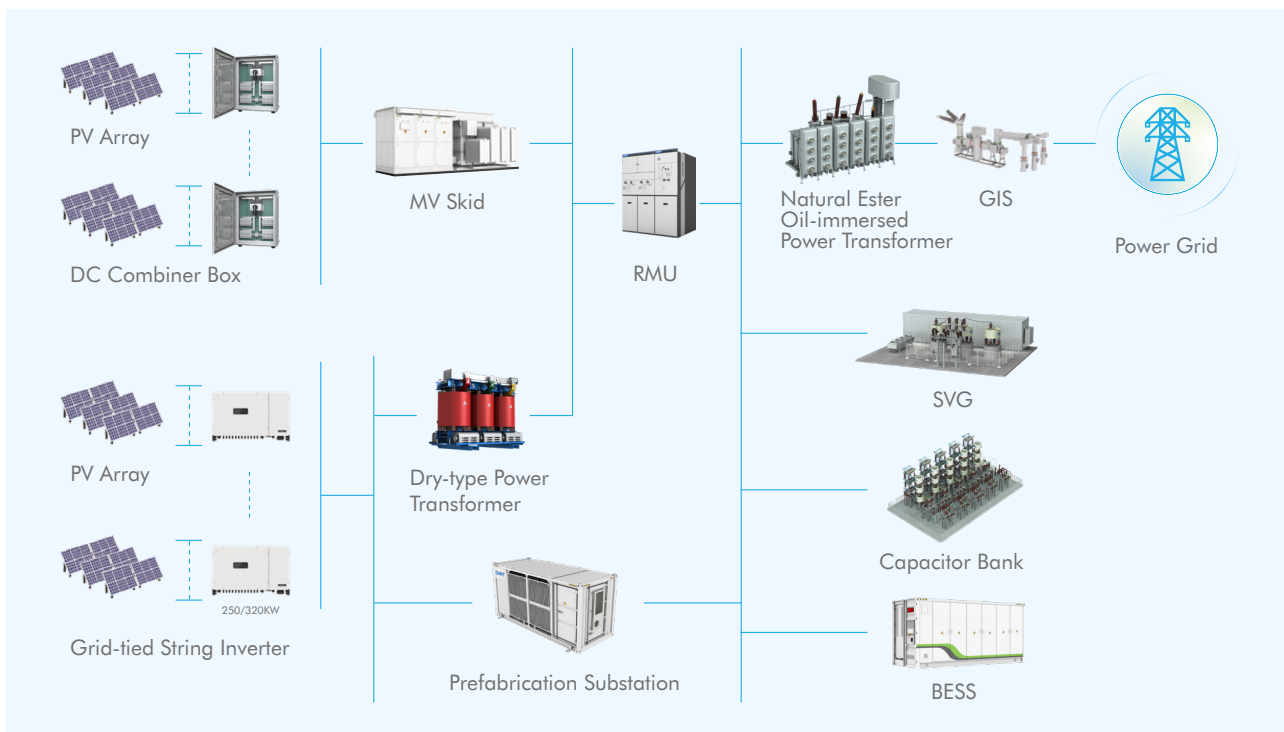
PV O&M: aiming for unmanned operation

Focused on monitoring, fault detection, and optimization, it aims for unmanned operation, smart diagnostics, and big-data analysis to enhance efficiency and cut costs.

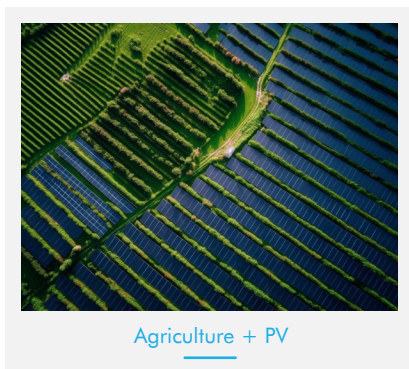
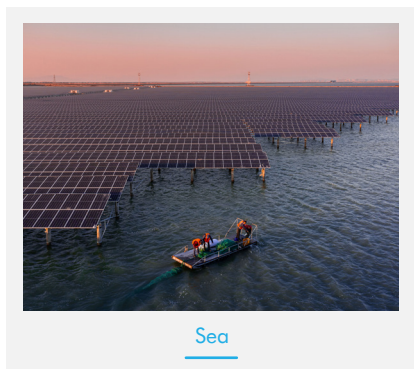


3.0

Utility Scale Solar Power Plant Solution

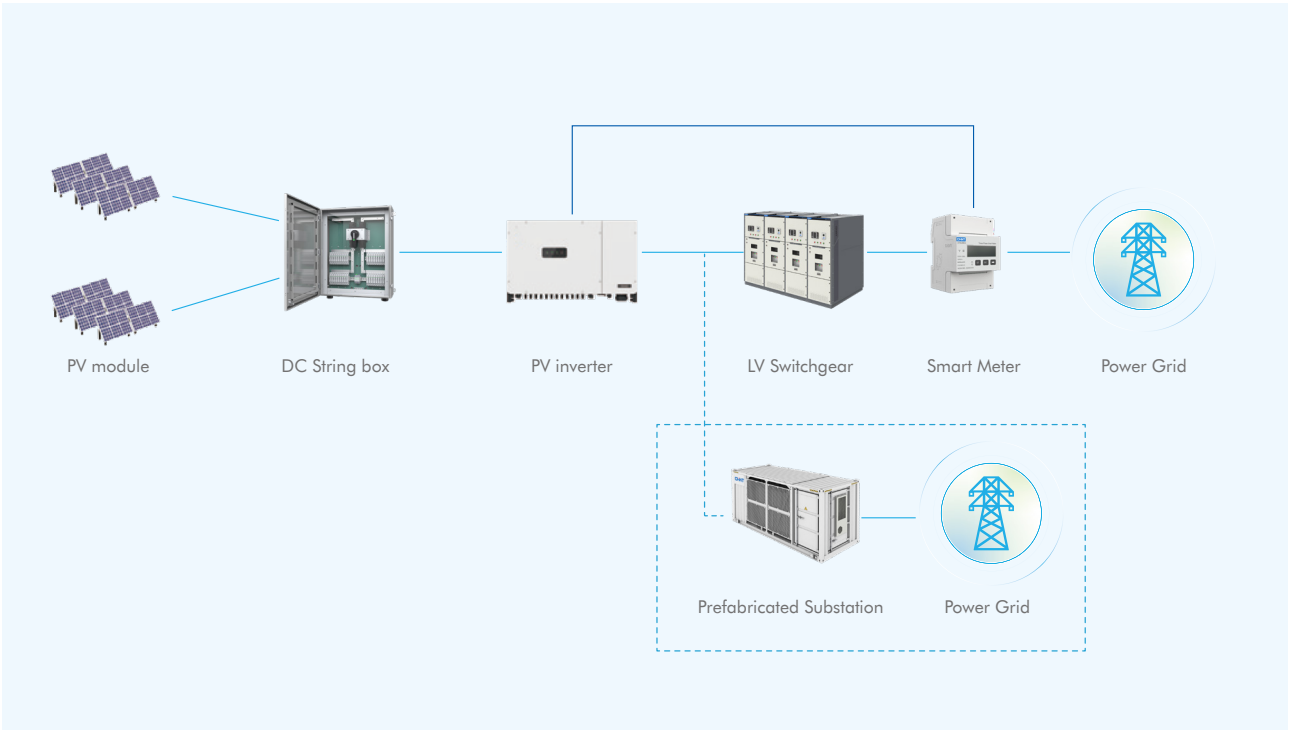


Application Scenarios



3.0

C&I Solar Solution



Application Scenarios



Factory



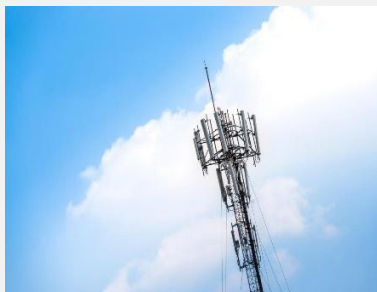
Commercial office building



Storage center



Water treatment plant



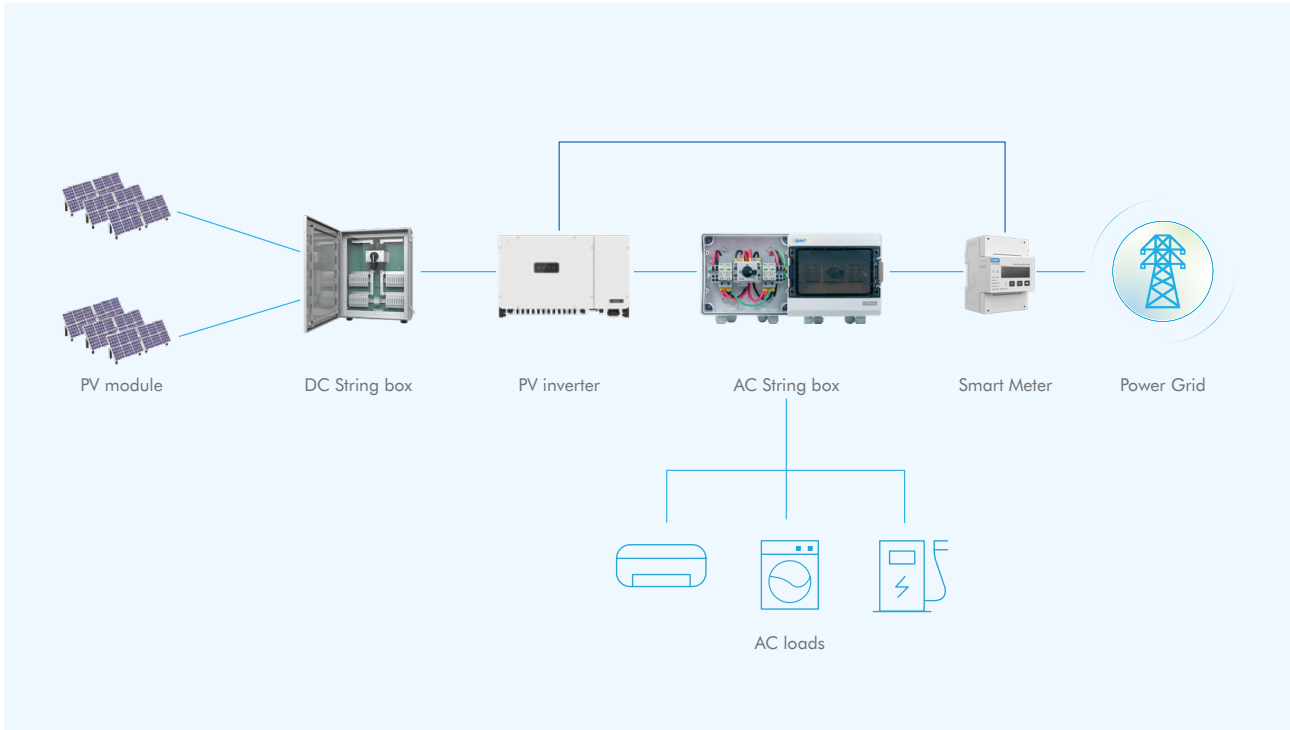
Communication base station



Gas station

3.0

Residential Solar Solution



Application Scenarios



Villa



Urban Residential building



Rural residential building



Green building

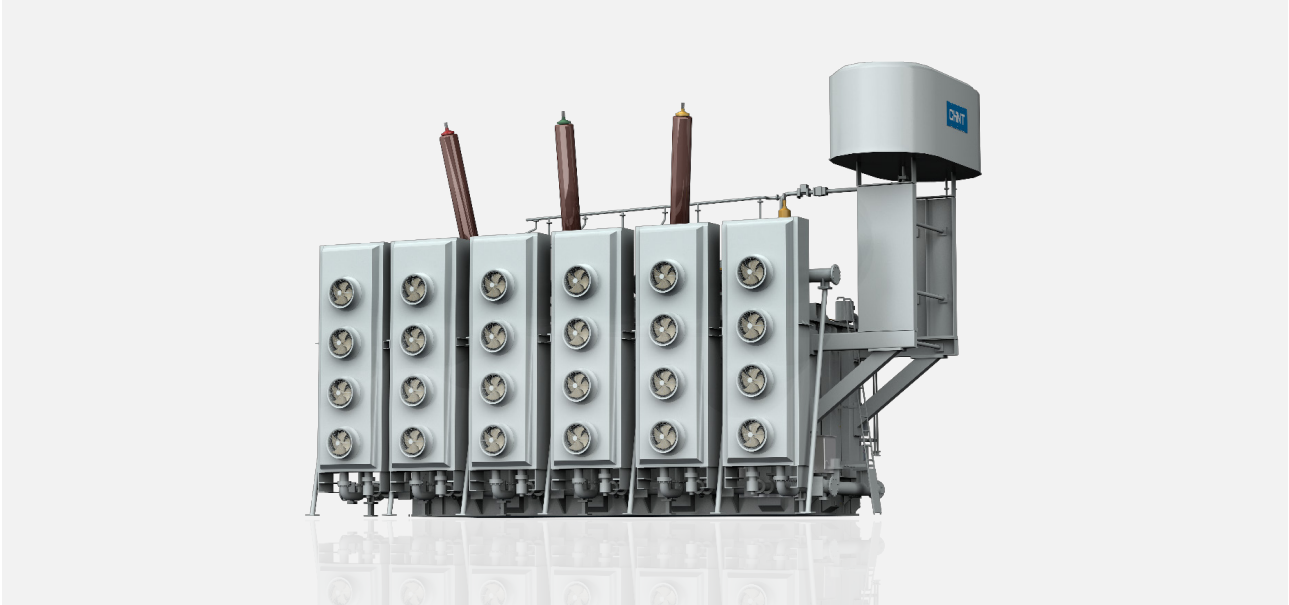


Sunroom



Public toilet

Featured Products



Natural Ester Oil-immersed Power Transformer

Natural ester oil-immersed power transformer is a full range of 750kV and below voltage power transformer designed and developed by CHINT in recent years, and has passed KEMA and other third-party type test certification, which can be used in photovoltaic booster power stations and power transmission and transformation supporting smart grids.

It has the characteristics of environmental protection, friendly, intelligent, low partial discharge, safety and reliability, and fully meets the requirements of users.

Leading the world in short-circuit testing.



Feature: The use of high-quality materials, noise reduction solutions, perfect technical.

Advantage: Low loss, low noise, low discharge, high short circuit withstand.

Benefit: Save operating costs, maintenance free.



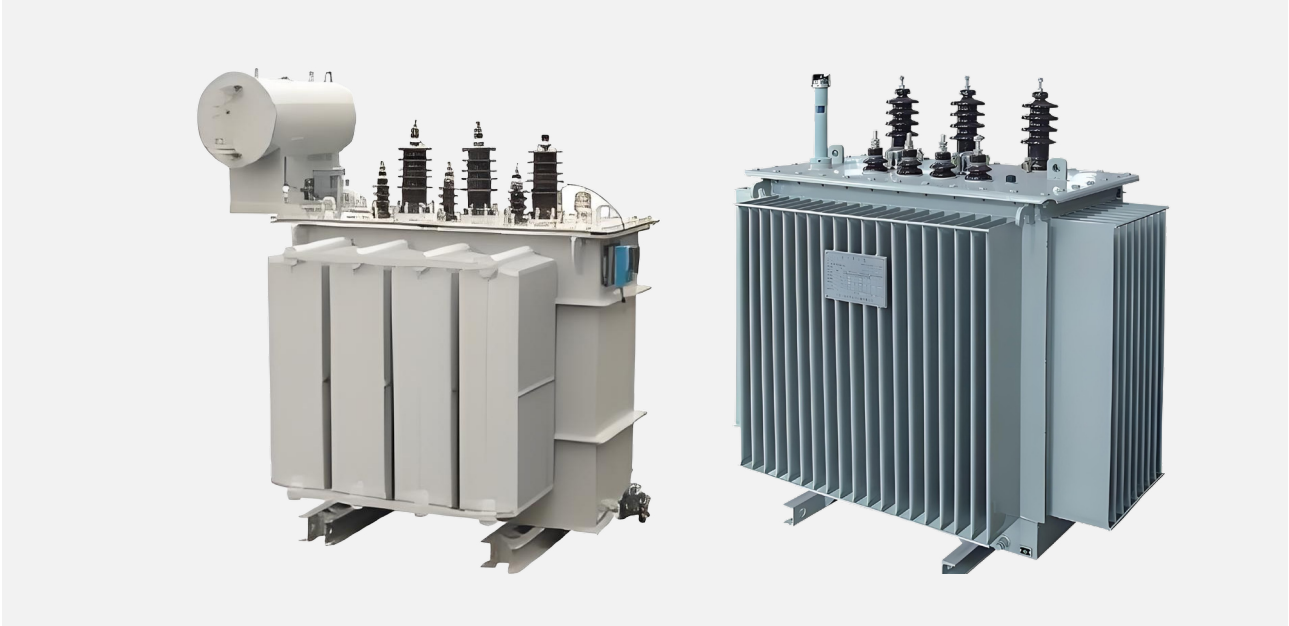
Feature: Use natural ester or synthetic ester oil.

Advantage: Degradable and degradation rate of 99%, environmentally friendly. The ignition point is more than 340 degrees Celsius, about twice that of mineral oil.

Benefit: More environmentally friendly and safer.

4.0

Featured Products



Oil-immersed up to 35kV



Feature: Iron core is made of high quality silicon steel.

Advantage: Provides good magnetic conductivity and low loss.

Benefit: By reducing energy loss, reduces power waste, also reduces long-term operating costs for users.



Feature: Mineral oil transformer.

Advantage: The technology is mature and the cost is economical.

Benefit: Provides a reliable option for projects with limited budgets while maintaining high performance standards.



Feature: Natural ester transformer.

Advantage: Good biodegradability, high flash point, excellent electrical performance.

Benefit: Enhanced safety and environmental performance, especially where fire protection requirements are stringent or environmental protection needs to be considered, providing a safer and more environmentally friendly option.



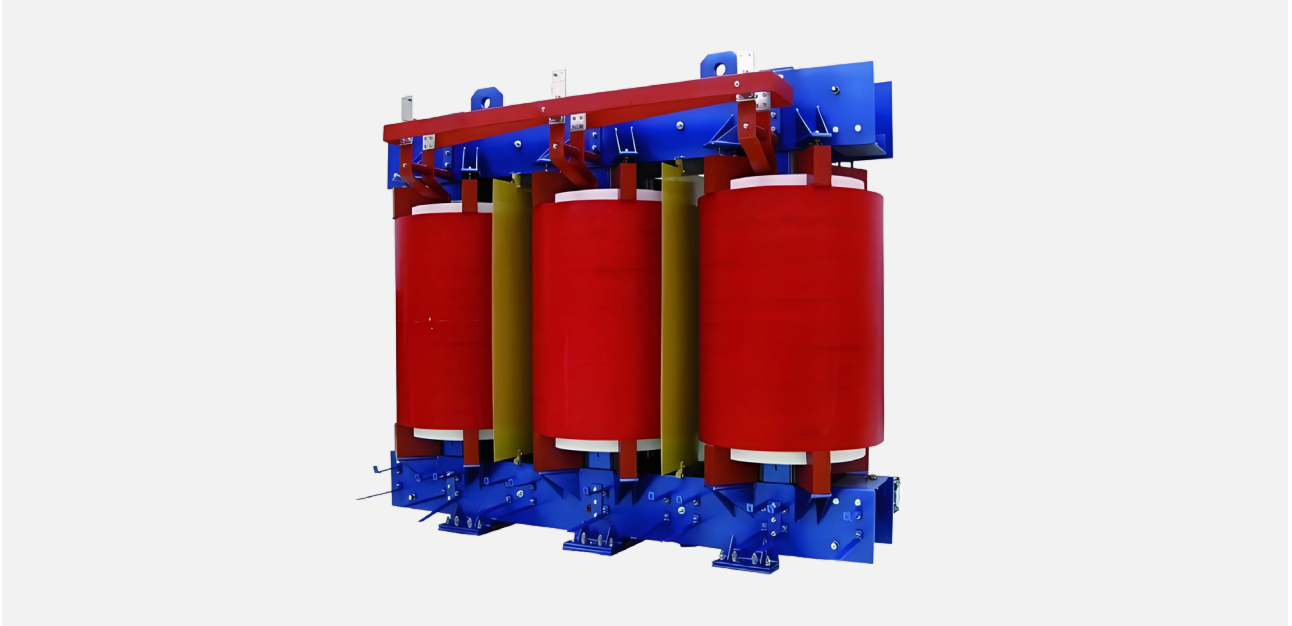
Feature: Fully enclosed corrugated tank structure design.

Advantage: Fully sealed structure, maintenance free, small size.

Benefit: Reduced maintenance costs, small footprint, suitable for application with limited space.

4.0

Featured Products



Dry-type Power Transformer up to 35kV



Feature: High mechanical strength and strong short-circuit resistance.

Advantage: Ensures transformer stability and durability even under extreme conditions.

Benefit: To provide users with long-term reliable service, reduce the failure rate.



Feature: Low loss and low noise design.

Advantage: Improves energy efficiency while providing a quiet operating environment.

Benefit: Helps users reduce operating costs and improve working conditions, especially in noise-sensitive areas.



Feature: good heat dissipation performance and strong overload capability, the capacity can be increased when forced air cooling.

Advantage: Normal operation is guaranteed even under high temperature or load exceeding the rated value.

Benefit: Enhanced transformer adaptability and flexibility to provide additional power support in emergency situations to meet temporarily increased power demand.

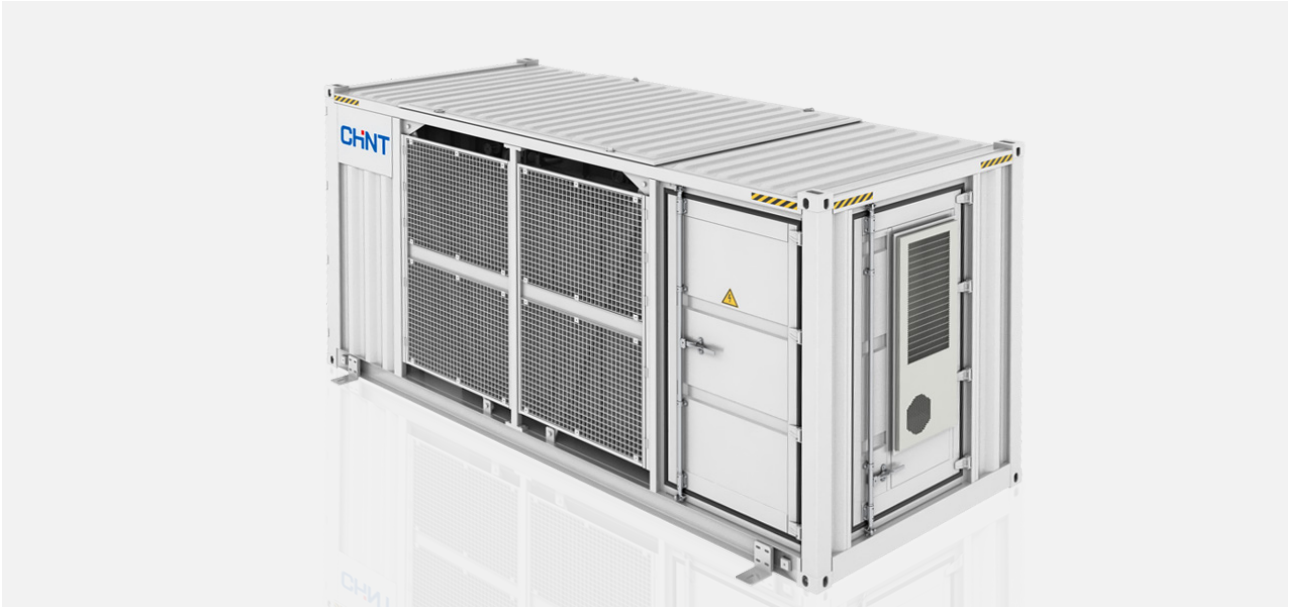


Feature: Materials and technologies with excellent fire resistance.

Advantage: Significantly reduces the risk of fire.

Benefit: To provide users with higher safety standards, especially in environments with stringent fire protection requirements.

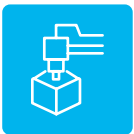
Featured Products



Prefabricated Substation

CHINT prefabricated substation is an integrated power distribution system which is designed and manufactured according to IEC 62271-202, combines switchgears, transformer, monitoring units and fire protection facilities, etc. All main components are CHINT brand. In the photovoltaic applications, it boosts the low voltage output from the inverter into medium voltage and connect to the grids.

CHINT provides turn-key solution from pre-design to installation guidance.



Feature: Medium-voltage up to 40.5kV, low-voltage up to 1.14kV, and capacity up to 11.15MVA. Dual or triple-winding transformer and multiple structural models.

Advantage: Flexible customization.

Benefit: Cater to diverse needs.



Feature: Working temperature range -40°C to $+55^{\circ}\text{C}$, enclosure corrosion resistance rated C5, protection level up to IP55.

Advantage: Protected from harsh environments.

Benefit: Adapt to extreme conditions.



Feature: Own brand main components pass third party type tests, with stable and reliable supply chain, ready for delivery 2-3 months after drawing approval.

Advantage: Excellent quality control, fast and stable delivery.

Benefit: Safe and reliable, fast and efficient.

Featured Products



NGH-40.5(Z) C-GIS

NGH-40.5(Z) (Cubicle type Gas Insulated Switchgear) offers an eco-friendly solution for electrical distribution. It features a compact design, ideal for space-limited installations, and replaces traditional SF₆ gas with a more environmentally friendly insulating medium, reducing greenhouse gas emissions. Constructed from high-quality materials, the C-GIS ensures durability and minimal maintenance. It supports remote monitoring and control, enhancing operational efficiency.

CHINT's commitment to sustainability is reflected in this innovative product, which delivers reliable performance while significantly lowering the environmental impact of power systems



Feature: Use dry air as an insulating medium.

Advantage: Save space, environment-friendly.

Benefit: Helping customers achieve green energy management goals.

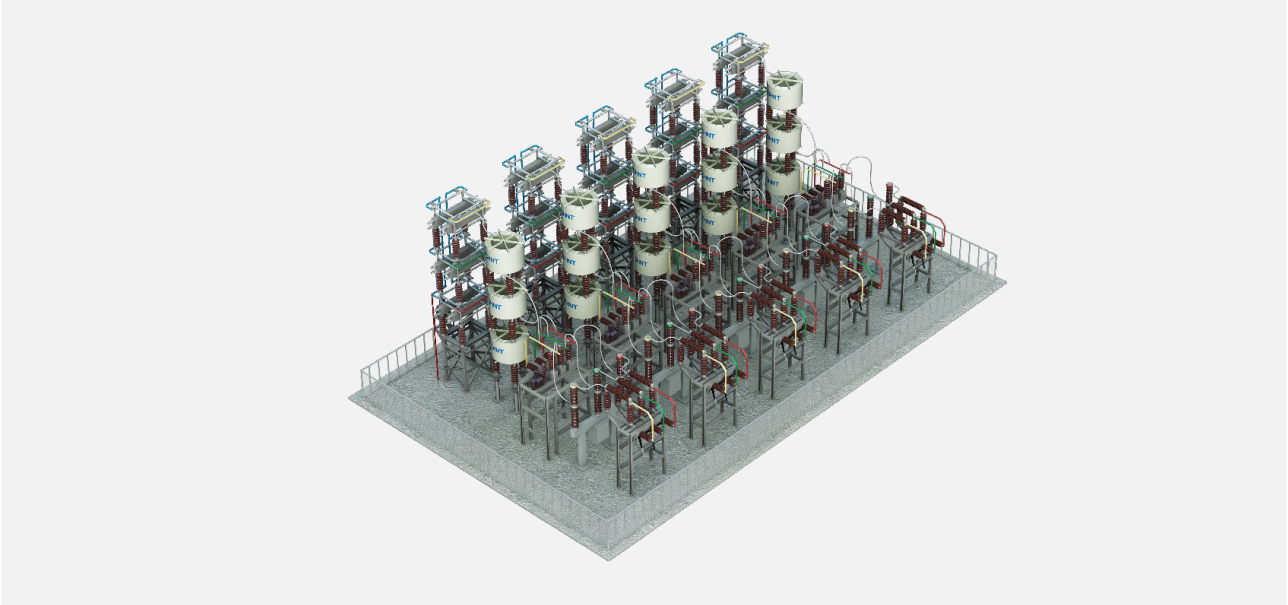


Feature: The use of high-quality materials, optimization of electromagnetic field.

Advantage: When the pressure in the gas box drops to the same level as the outside, the switchgear can operate normally.

Benefit: Safe and reliable.

Featured Products



Capacitor Bank

TBB Type Shunt Capacitor Bank, the highest rated voltage is 230kV, and the maximum capacity is 100Mvar. Mainly used in power system to compensate the reactive power, reduce line loss and improve power quality.

The product adopts advanced design and manufacturing technology to ensure that the product has the characteristics of high operational reliability, easy installation & maintenance, and environment friendly.

As the core component, the capacitor unit has obtained 50/60Hz STL Type Test Certificate.



Feature: Rolled one-piece casing structure, ultrasonic welding process, vacuum-treated low-viscosity insulating oil.

Advantage: Good sealing, uniform internal heat distribution, high insulation performance.

Benefit: High operating reliability, service life of more than 30 years.



Feature: Frame live design structure and capacitor unit equipotential, modular design.

Advantage: No discharge risk of capacitor to frame, high integration and compact structure.

Benefit: Easy transportation and installation, meet large capacity requirements, low equipment investment.

Featured Products



PVBx DC Combiner Box

The Box is mainly used to collect the current from multiple photovoltaic modules for easy connection to inverters for photovoltaic power stations and commercial photovoltaic systems.

- Maximum No. of String:32
- Rated Voltage:1500VDC
- Rated Input Current:21A
- Maximum Output Current:456A
- Operating Temperature: -25~+60°C
- International Protection:IP65
- IEC 61439-2:2020



Feature: Door locking options - hasp, three-point lock; Handle can be installed inside and outside.

Advantage: Highly customizable, door lock, box material, handle installation mode can be customized.

Benefit: It can be used in multiple application scenarios.



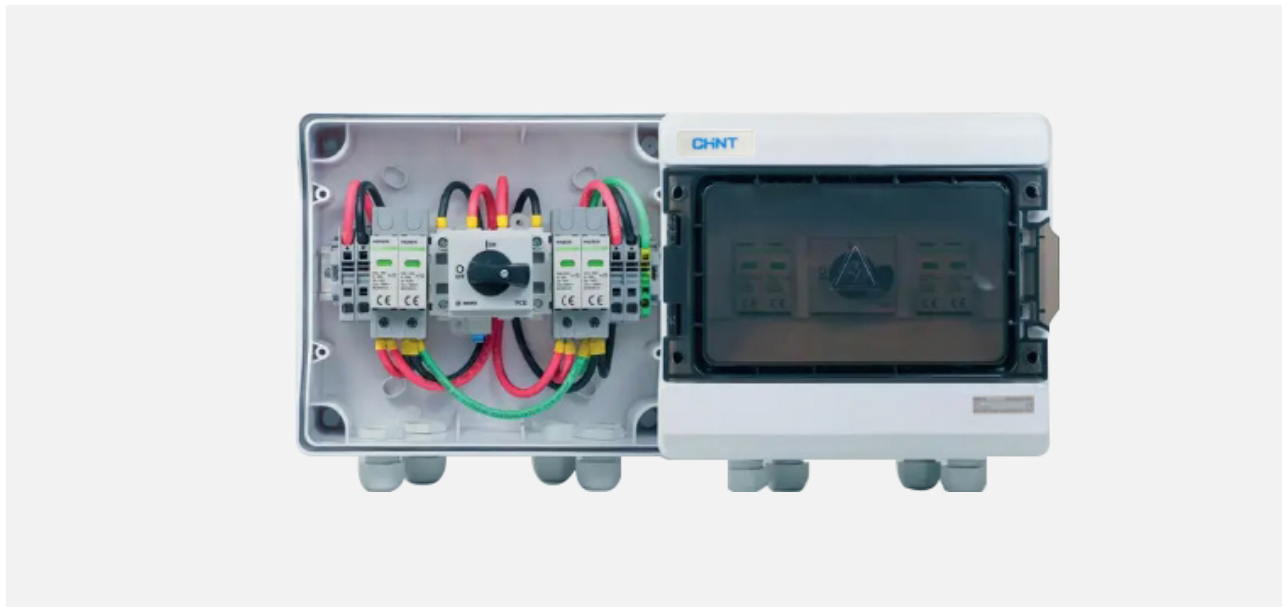
Feature: Rated voltage up to DC1500V.

Advantage: The highest mainstream voltage in the industry.

Benefit: Safer and more convenient.

4.0

Featured Products



AC/DC String box

AC:

- Modular string box with MCB, RCCB and overvoltage protection.
- Modular circuit breaker 3 poles + neutral 25A C curve breaking capacity 6kA - EN60898-1.
- Overvoltage protection Class II In 20kA I_{max}40kA Up 1,5kV EN 61643-11 with associated fuse protection.
- Double insulation Class II box in polycarbonate material for indoor and outdoor use with high impact resistance (IK08).

DC:

- Fuseholder and fuse 20A gPV + switch-disconnector 40 A+ surge protection class II maximum voltage 1000Vdc, for safe installations.
- Double insulation.



Feature: Prefabricated rail terminals and rails.

Advantage: 30% shorter installation time shorter than non-prefabricated type.

Benefit: Saving cost and time.



Feature: PC plastic enclosure - self-extinguishing from fire, flame retardant, non-toxic.

Advantage: Higher combustion safety than ordinary plastic material.

Benefit: More safety and reliability.

Featured Products



NGC5 (Low Voltage Switchgear)

- Certificates: TUV/CE
- Rating current up to 6300A
- Icw up to 100kA/1s
- Up to IP43
- 50/60Hz



Feature: Special ventilation channel design.

Advantage: Achieve excellent natural ventilation system.

Benefit: Reduce temperature rise and ensure safety.



Feature: Modular design of drawer units.

Advantage: Rapid maintenance and expansion.

Benefit: Reduce maintenance and upgrade cost.



Feature: Flexibly matched with intelligent components.

Advantage: Achieve remote operation and maintenance.

Benefit: Intelligent operation and maintenance, improve power safety, reduce customer operation and maintenance costs.

4.0

Key Offerings

Power Transformer



Rated Power: Up to 1000MVA

Rated voltage: Up to 1000kV

Standard: IEC, IEEE, AS, BS, etc.

Wide Application: Export to more than 120 countries and regions

- High security and reliability in operation
- Economic and efficient to reduce network loss and operation cost
- Compact design, Low noise and light in weight
- Competitive short delivery time

Shunt Reactor



Rated Power: Up to 250MVA

Rated voltage: Up to 750kV

Standard: IEC, IEEE, AS, BS, etc.

Wide Application: Export to more than 120 countries and regions

Variable Shunt Reactor



Rated Power: Up to 250MVA

Rated voltage: Up to 750kV

Standard: IEC, IEEE, AS, BS, etc.

Wide Application: Export to more than 120 countries and regions

Mobile Substation



Rated Power: Up to 120MVA

Rated voltage: Up to 245kV

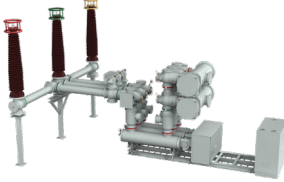
Standard: IEC, IEEE, AS, BS, etc.

Wide Application: Export to Italy, Brazil, Honduras etc.

4.0

Key Offerings

HV Switchgear-GIS



Hybrid Compact Switchgear(HGIS): Up to 252kV

Gas Insulated Switchgears(GIS): Up to 550kV

- Reliable disconnecter
- Perfect tightness
- Reliability insulator
- High adaptability



HV Switchgear-AIS



HV CB, DS, ES: Up to 252kV

- SF6 Circuit Breaker (Live & Dead tank)
- Disconnector (Horizontal & Vertical)
- Earthing Switch



MV Switchgear



MV Switchgear up to 40.5kV

- C-GIS: 12kV, 24, 40.5kV
- RMU: 12kV,17.5,24,40.5kV
- AIS: 12kV,17.5,24,40.5kV



Ex9XG BK Series PV Backup Protection Solution



- International Protection: IP65
- Plastic enclosure: PC
- Maximum outgoing loop:36
- Standard: IEC60670/IEC61439

Functional value: Integrates multiple functions for monitoring, metering, protection, isolation and Automatic switching between grid & PV in household systems, facilitating electricity management.

Protection value: IP65 enclosure resists environment, ensuring stable operation and longer service life.

Quality value: NOARK components and customized flip cover enhance reliability, safety and meet owners' expectations.

4.0

Key Offerings

Ex9ASD DC Series Air Switch Disconnecter



Frame current: 2500A, 4000A

Rated voltage: DC750V(3P), DC1000V(4P), DC1500V(4P)

More Safety: Insulation voltage up to 1600V

Wide Application: Utilization Category includes DC-22A, DC-23A, DC-PV2

Long Electrical Durability: DC750V: ≥ 5000 times, DC1500V: ≥ 3000 times



NA8 HU Series Air Circuit Breaker



Frame current: 2500A, 4000A

Rated voltage: AC 800V, 1000V, 1150V

Number of Poles: 3P, 4P

High Breaking Capacity: Options includes 55kA, 65kA, 85kA, 100kA, 120kA, 135kA and 150kA

High Reliability: The highly reliable Ex9A is tested and verified under extreme conditions

Powerful Functions: The smart controller support LSIG protection, all parameters measurement and other advanced functions



Ex9I(Z) HV Series Switch Disconnecter



Frame size: AC Ex9I-HV: 250A, 630A; DC Ex9IZ HV: 320A, 630A

AC Ex9I-HV: 250A, 630A; DC Ex9IZ HV: 320A, 630A

Rated voltage: Ex9I-HV: AC380/690V, AC800V, AC1000/1140V; Ex9IZ-HV: DC1000V, DC1500V

Number of Poles: 2P, 4P, 6P

Higher Voltage: The maximum voltage can reach 1500VDC, 1140VAC. It reduces the line loss of photovoltaic system

Trustable stability: Rated short-time withstand current is up to 10kA/1s for 630A

Wide Application: Suitable to be applied in scenarios where reverse current and overload may occur



4.0

Key Offerings

Ex9MD HV Series Moulded Case Circuit Breaker

**Frame current:** 630A**Rated voltage:** DC1500V**Number of Poles:** 2P**Compact Size:** The product width is only 98mm, effectively save the space of combiner box**Safe and reliable:** The short-circuit breaking capacity can reach up to 15kA, reliably cut off the short-circuit fault current under DC with zero arc flash

NM8N HV Series Moulded Case Circuit Breaker

**Frame current:** 250A, 400A, 630A**Rated voltage:** AC 800V, 1000V, 1150V**Number of Poles:** 3P**Dedicated design:** The maximum working voltage can reach up to AC 1150V and insulation voltage is up to AC1250V**High Breaking Capacity:** The ultimate short-circuit breaking capacity is rated at 50kA@AC800V, cover the most of protection requirement in PV system

Ex9BP Series DC Miniature Circuit Breaker

**Rated current:** 10~63A**Rated voltage:** DC 1000V**Number of Poles:** 2P, 4P**Dedicated design:** Thanks to its polarity independency design, Ex9BP are suitable for photovoltaic and energy storage applications up to DC1000V with non polarity feature**Flexible Accessories:** It can be combined with wide range of accessories including auxiliary and signal contacts, shunt trip release and undervoltage release

4.0

Key Offerings

Ex9BD Series DC Miniature Circuit Breaker



Rated current: 32~100A

Rated voltage: DC 300~1000V

Number of Poles: 1P, 2P, 3P, 4P

Dedicated design: Thanks to its polarity independency design, Ex9BP are suitable for photovoltaic and energy storage applications up to DC1000V with non polarity feature

Higher Voltage: Rated voltage up to 1200 VDC suitable for protection of solar system with higher voltage



Ex9FP30H Series DC Fuse



Rated current: 2~30A

Rated voltage: DC 1500V

Number of Poles: 1P

Higher Voltage: Rated voltage 1500 VDC suitable for protection of solar system with higher voltage

High Breaking Capacity: Rated short-circuit breaking capacity I_{cn} is up to 20 kA, capable to protect against short circuit of PV strings

More convenient: Modular product design, guide rail installation, easy to replace the fuse-link



Ex9UEP Series DC SPD



- Max continuous operational voltage UCPV from 500 to 1500 V DC
- Nominal discharge current I_n 20 kA (8/20 μ s) per path
- Maximum discharge current I_{max} 40 kA (8/20 μ s)
- Impulse discharge current I_{limp} 6.25 kA (10/350 μ s)

Wide application: De-signed and tested according PV I+II and II class from EN 61643-31 standard

User friendly: Indication front window helps users to know the status of device and remote-signal port is able to provide remote indication and alarm. Plug-in module design make it convenient to change module without device disconnection



4.0

Key Offerings

Ex9IR Series Switch Disconnecter



CE

Rated voltage: DC1500V**Rated current:** 13A-125A**Utilization Category:** DC-PV1, DC-PV2**Outstanding performance:** The double Breaking Technique improves the making and breaking capacity of the product and makes the isolation more reliable in the DC high-voltage application environment**Modular Design:** Increasing or decreasing the load circuit is optional, saving installation space

Ex9C Series Contactor



CE CB UL KEMA ENEC

Rated voltage: 1000V (max)**Rated current:** 06A -1450A**Frequency:** 50/60Hz**Wide application:** The rated working voltage is up to 1000V, and the rated working current is up to 1450A under the AC-1/1000V utilization category**Excellent reliability:** The dust-proof design greatly improves the reliability of the contacts**Easy wiring:** The coil can be wired at either the top side or the bottom side**Strong extensibility:** The built-in auxiliary contacts that can be 2NO+2NC, meeting the design requirements of various circuits

Ex9JPV Series On-board Relay



CE A UL

Rated working current: 75A~200A**Maximum switching voltage:** 320VAC~800VAC**Mechanical durability:** 1 million cycles**Safe and reliable:** The product has strong breaking ability, and the contact is not easy to melt or weld during equipment emergency stop**Excellent performance:** low temperature rise of the product, and reliable long-term operation under current load**Easy to install:** Easy to weld pins, and the welding is consistent and good

Smart Meter DDSU666-G/DTSU666-G Series

**Rated voltage:** 230V, 400V**Interface:** RS485**Protocol:** Modbus-RTU**Baud rate:** 1200/2400/4800/9600/19200/115200 bps**Special for PV and BESS:** Bi-directional measurement for kW and kWh**Multi-measurement:** kWh, W, V, A, PF, Hz, etc**Fast responding for 0-injection:** Active power refresh rate is about 50ms

4.0

Complete Porfolio

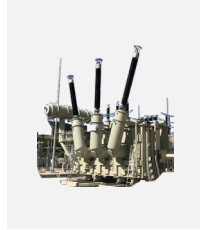
Transformers



750kV Oil-immersed Transformer



500kV Oil-immersed Transformer



420kV/330kV Oil-immersed Transformer



220kV Oil-immersed Transformer



110kV Oil-immersed Transformer



69kV Oil-immersed Transformer



Oil-immersed Power Transformer up to 35kV



Dry-type Power Transformer up to 35kV

Substation



Mobile Substation



Prefabricated Substation

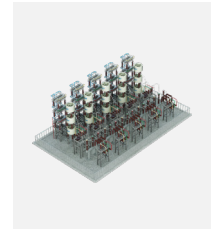
Shunt Reactor and Variable Shunt Reactor Capacitor Bank



Shunt Reactor



Variable Shunt Reactor



Capacitor Bank

HV Switchgear



GIS



AIS

MV Switchgear



C-GIS

LV Switchgear



MV Switchgear up to 40.5kV



NGC5

DC Combiner Box



PVx DC Combiner Box

AC/DC String box



DC/AC String Box

PV Backup



Ex9XG BK Series

Cable & Wire



1-35kV Power Cable

Smart Meter



DC 1500V Solar Wire



DDSU666-G/DTSU666-G

4.0

Complete Porfolio

LV Components



Ex9ASD DC Series Air Switch Disconnecter



NA8 HU Series



NM8N HV Series



Ex9I(Z) HV Series Switch Disconnecter



Ex9MD HV Series MCCB



Ex9M HV Series MCCB



Ex9JPV Series On-board Relay



Ex9IR Series Switch Disconnecter



Ex9C Series Contactor



Ex9BP Series DC MCB



Ex9FP30H Series DC Fuse



Ex9UEP Series DC SPD



4Ex9I40 AC Isolator



Ex9BD Series DC MCB



Ex9BT3G Series AC change over switch

5.0

Sales References

Saraorci 13.86MWp PVPP Project



Date

2023

Country

Serbia

Scope of Supply

35kV pre-fabricated substation, 35kV dry-type power transformer, 35kV high-voltage switchgear, 35kV oil immersed power transformer.

Customer Values

- The project employs local labor, creating numerous job opportunities for surrounding communities.
- After completion, the project is expected to aid Serbia in building a green future by.



Generating 16.62 million kWh of electricity per year



↓ 5,100 tons of standard coal per year



↓ Nitrogen oxides emissions by 3.2 tons per year



↓ CO₂ emissions by 16,000 tons per year



↓ SO₂ emissions by 2.7 tons per year

Guayaquil 17.75MW Rooftop Solar Project



Date

2023

Country

Ecuador

Scope of Supply

35kV pre-fabricated substation, 35kV dry-type power transformer, 35kV high-voltage switchgear, 35kV oil immersed power transformer.

Customer Values

- A one-stop solution and operation and maintenance services, reducing time and procurement costs
- Solar photovoltaic panels installed on rooftops, rainwater siphon systems, and glass curtain walls can maximize the utilization of natural resources and reduce energy consumption
- Specifically, the second phase of the project covers approximately 50,000 square meters of rooftop and is expected to generate 12.266 million kWh annually, saving the enterprise an estimated.

5.0

Sales References



Spain | Maetel 5.6MW Solar Power Plant



UK | Minety 99.8MW/98MWh BESS Project



UK | Feeder Road, Maldon, Tayor Road etc. BESS Projects



Italy | CARTON PACK S.p.a. 2MW Rooftop Solar Plant



Slovenia | 6MW Ground PV EPC Project



Greece | METON New Energy Power Station Transformer project



Greece | Terna Wind Farm 150kV Power Transformer Project



Azerbaijan | Winery 450kW Rooftop Project



Kazakhstan | Shokpar 109MW wind farm



Norway | 2MW Rooftop Project



Mexico | Reynosa wind power station 400kV 225MVA Power Transformer Project



Mexico | Amistad I-IV Station, Magdalena Station and Dolores Station Power Quality Project

CHINT GLOBAL PTE. LTD.

8 Kallang Avenue, #04-06/09 Aperia
Office Tower 1, Singapore 339509

Web: www.chintglobal.com

E-mail: global-sales@chintglobal.com

